

~ Embedded Cane Molded Cabochon ~



This project was designed for PJ003 “Egg Shapes, Two Rounds, and one Oval” Flexible Urethane Rubber Mold. This project is included with the mold but the technique can be used with any solid, flexible mold.

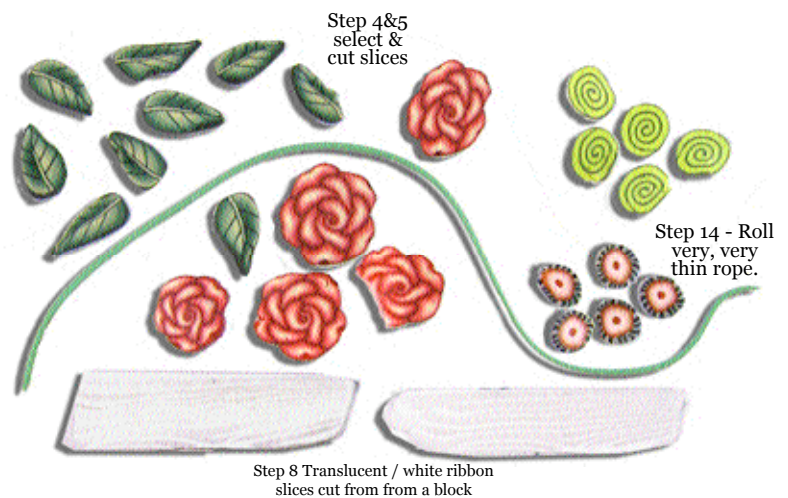
These flexible, urethane rubber cabochon molds were designed for making jewelry and embellishments.

Cabochons By Penni Jo Couch

www.bestflexiblemolds.com

Materials Needed:

- Solid Best Flexible Mold: We used PJ003 but this project will work in any of our cabochon or flat bottom molds.
- Polymer Clay: Any color for background. I used marbled clay made of black and mokume gane scraps. Green or light blue for the background loops.
- Polymer clay canes: Canes in a variety of flowers, leaves, jelly roll, other fun slices, translucent/white ribbons. Right: some suggested canes. *The translucent ribbon cane is made similar - ly to “Faux Ivory”. Instead of three colors, use two or three sheets of translucent to one sheet of white. Stack the sheets, press or roll the stack thinner, cut, put one piece on top the other, roll or press thinner, cut, stack, thin, until you get a block, that when cut, reveals a piece of translucent clay with streaks of white running through it.*
- Sharp tissue blade for cutting canes and blocks.
- Blunt pointy tool like thin double pointed knitting needle.



- Sharp craft knife and your favorite clay tools.
- Ultra fine glitter, I used multi.
- Varnish: for polymer clay if a high gloss finish is desired.
- Optional: small square of mokume gane clay slightly larger than the opening in the mold.
- Pasta machine dedicated to polymer clay or acrylic roller.

An original tutorial by Penni Jo Couch

Artist, Sculptor & Designer of Best Flexible Molds
1413 N. Lincoln Avenue • Moore, OK 73160 • 405-830-9148

To order via the web go to: www.bestflexiblemolds.com

To re-order call or write to pennijo@pennibears.com. We take PayPal, check, or money orders.

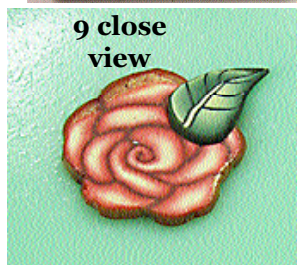
Instructions:

1. Condition the background clay. Marble the clay if desired. (I used black and scraps of Mokume Gane made using pearl blue, pearl pink, pearl white mixed with black clay.)
2. Use less clay than the chart shows. For the large round use only a 1 inch ball of clay.
3. Press it into the mold firmly to create a shallow cabochon. Remove and set aside.
4. Select canes for the design. When choosing flowers, if possible, have more than one size from which to cut. A variety of sizes makes a more lifelike and interesting design. Lay out the flower slices as shown. Don't worry if some are not whole. Partial slices can be used behind other flowers and leaves with good effect.
5. Slice the selected canes into the thinnest slices possible using a sharp tissue blade. Determine which side is the 'best'. Set the cut slices on a sheet of paper, wrong side up as you will be lifting them and putting them into the cabochon mold. Everything that is 'face down' now will be on the front of the cabochon when de-molded.
6. After slicing the leaf canes, pinch the tips to make them more pointy. When they are flattened, the tips get plump so pinching them thin first helps to keep them 'leafier'. Leaves can be in a variety of sizes too. To prevent distortion while cutting; slice one leaf, turn the design over, slice again. Repeat cutting from one side then the other until you have an odd number. I used nine.
7. Cut four or five accent slices like a jelly roll cane, or other fun canes. I used a green and dark green jelly roll cane about 1/4 inch across and a bulls eye cane slightly smaller in similar colors as the flowers. All the canes were scrap pieces.



8. Cut two ribbons of a block of clay that is thin layers of white between slightly thicker layers of translucent clay. (this technique is also known as a "ghost cane") The white streaks will be opaque on a dark background and the translucent will let some of the dark color come through. Set aside

9. Using the blunt pointy tool, gently touch the back of a slice, near the edge and lift it into the cab mold.

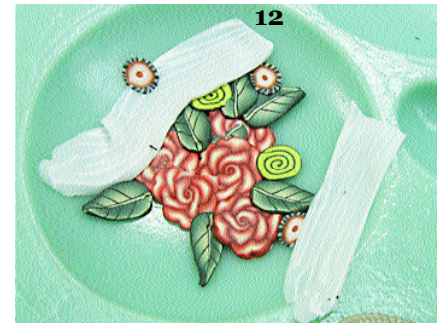
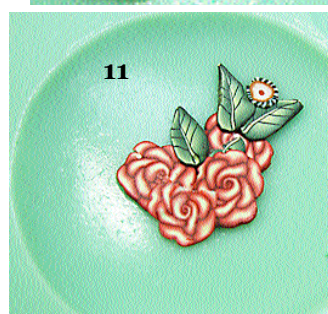
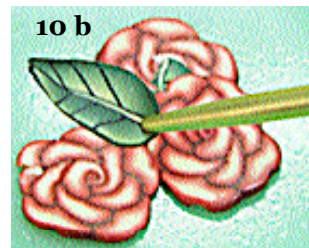


(See picture 10 b) Start your design by placing your foremost flower slightly off center into the mold. Put a leaf on the first flower with just a small point going past the edge of the flower. Add a smaller one to one side covering the tip of the leaf.

10. Add another flower then another leaf between two of the flowers.



11. Continue to add flowers, leaves and fun slices, building the design from the front to the back adding the small jelly roll and bulls eye slices as shown.



12. Add the translucent / white ribbons as shown.



13. Add more cane slices to go 'behind' the ribbons.



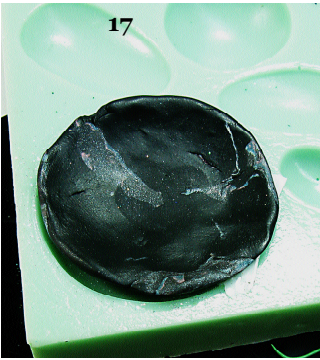
14. **RIBBONS AND LOOPS.** Roll the green or light blue clay into a very, very thin rope. Pull off 1/2 inch pieces and loop them out from the flowers as shown.

15. Glitter: if desired, sprinkle a tiny bit of glitter into the mold for added sparkle.

16. Be sure that the mold is on a very sturdy surface like a cabinet or kitchen table.



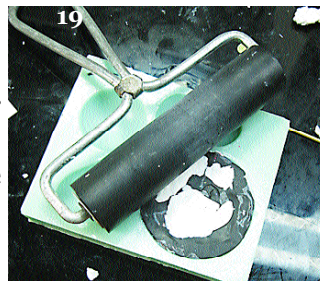
17. Press the shallow cabochon made in step 3 very, very firmly into the mold. Press from the center out.



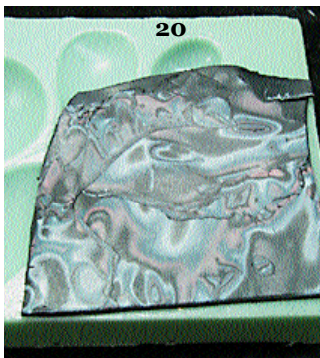
18. Cut away any clay that may have squished out of the mold while pressing. Use a sharp tissue blade to remove any excess.



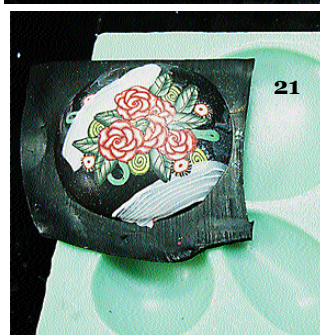
19. If there is a dent in the back, use the excess clay or any scrap clay to fill the dent.



20. Use the square of mokume gane or other clay to the back as shown. Press from the center out to remove any air bubbles. To seal the back, roll over the clay with a brayer or acrylic rod to smooth.



21. Flex the mold to release the cabochon. Turn it over and lay it on a cutting surface.



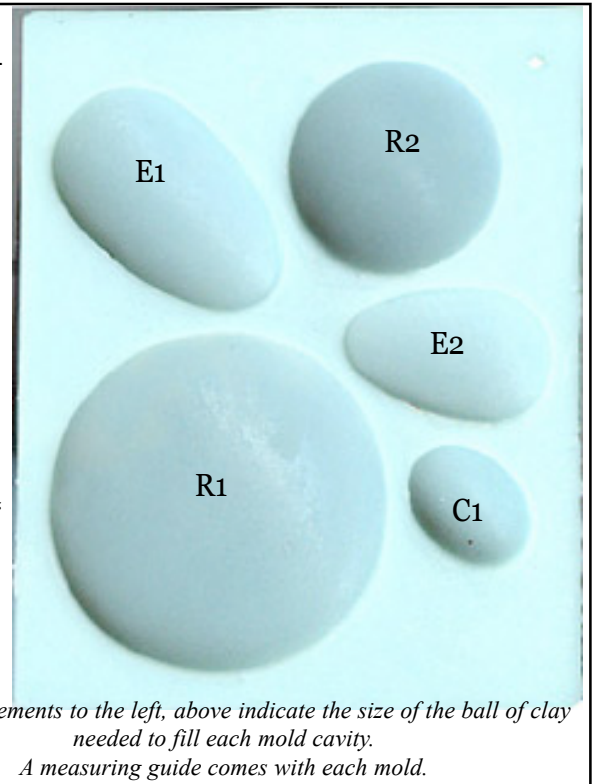
Shallow Egg shapes - E1 & E2; one oval: C1- 20x15mm; and two rounds - R1 & R2. The larger round shape can be used in tandem with the round in mold PJ001 to make a decorative disk. Mold the shape in PJ001 from scrap. Cut a circle of pattern clay to cover it being careful not to catch air pockets. Press the large, patterned shape into R1 to smooth and create a large round pendant.

Size of ball of clay needed to fill an opening:

Cab, oval
C1- 1/2"

Round
R1- 1 1/16"
R2- 3/16"

Egg shape
E1- 11/16"
E2- 1/2"



The measurements to the left, above indicate the size of the ball of clay needed to fill each mold cavity. A measuring guide comes with each mold.

22. Use a sharp craft knife to cut away the excess backing clay.



23. Bake on a cardstock surface or index card with no lines to avoid shiny spots on the back following manufacture's instructions.

24. When cool, sand the back and edges.

25. Varnish: two or three coats of polymer clay friendly finish like Minwax's Polycrylic or Pledge Future Acrylic Floor Finish.
26. Add a pin back for a brooch or a bail for a pendant.

Have Fun!!

Below: Molded parts from the PJ003 Mold.

- R-2 Mokume Gane covered round cabochon.
- R-2 Large round with embedded canes.
- E-1 Large egg shape covered with Mokume Gane.
- C-1 Small oval cab covered with Mokume Gane.
- E-2 Small egg shape covered with Mokume Gane.



© 2010 Penni Jo Couch

An original tutorial by Penni Jo Couch Artist, Sculptor & Designer of Best Flexible Molds

1413 N. Lincoln Ave. • Moore, OK 73160
www.bestflexiblemolds.com • pennijo@bestflexiblemolds.com